



Ironville & Codnor Park Newsletter



Local news, events, articles and more September 2025



Welcome to Issue Number Twenty Three

We hope that you continue to find our village newsletter of interest and enjoy its articles and other contents. If you would like to get in touch or send in articles or other news items please write to the editor - Andy (acadman175@yahoo.com)

For further information why not visit the web site: <http://tinyurl.com/nzxc2t9w>

News From Ironville and Codnor Park Primary School



☎ 01773 602936

Ironville Adventurers

With support from the PTA, our children have enjoyed a rich variety of school visits that have brought learning to life beyond the classroom this year. From exploring nature at Whitepost Farm and at the local reservoir, to discovering history at Newark Air Museum, geography at Filey and science at the Bradford Film and Media Museum; each visit has been carefully chosen to expand knowledge and insight. These experiences have inspired and delighted. Whether it was the excitement of a residential for all children in Years Four to Six, and our first ever Year Three 'in house' residential, the wonder of the theatre in Derby, or the hands-on learning on a garden centre, every trip has supported personal growth, social development, and academic learning. Visits to Derby University and another primary school in inner city Nottingham, has also helped raise aspirations and foster inclusivity. Our 'house' visit to the winning team demonstrated the sense of belonging and pride our children develop.



www.ironvillecodnorpark.derbyshire.sch.uk



Congratulations to our local Youth Club on achieving an award of £29,040 from BBC Children in Need. This will help to secure the clubs future. (See pages 5, 18 & 19 for further information).



Central Infinity Allstars Cheerleaders in action at the Village Fun Day See page 16 for more info.

Parish Council Update *by Kath Gruber, Parish Clerk*

Working for the Village, All Year Round

As summer moves through the village, Ironville Parish Council continues to focus on keeping our community well-maintained, supported, and future ready.



At our July meeting, we welcomed updates from Futures Housing, who are actively responding to resident concerns. A new post will be installed to prevent dangerous parking on Queen Street, a second skip day is being considered to help with waste disposal, and a litter pick and walkabout are being planned to keep our neighbourhood clean and green. We're grateful for their partnership in making Ironville a better place to live.

We also discussed **plans for the Christmas 2025 event**, including improvements to Santa's Grotto, a "best dressed" competition, and involvement from local schools. It might seem early, but by planning now, we aim to deliver another magical event for families to enjoy!

The Council is also preparing for **Martyn's Law**, new national legislation to improve safety at public events. We've agreed to trial the recommended measures during the Christmas event to ensure our approach is both practical and protective.

Accessibility and Transparency Online

Ironville Parish Council is committed to being open and inclusive. We've adopted a new IT Policy and agreed to carry out regular checks to ensure our website meets accessibility standards – so that every resident can access Council information with ease.

Defibrillator Maintenance

Safety remains a priority. Following a recent inspection, the Council has approved minor maintenance to ensure our defibrillators remain in excellent working order should they ever be needed.

Could You Be One of Our New Councillors?

We currently have **two vacancies** on Ironville Parish Council and are inviting applications from residents who want to help shape the future of our village.

You don't need prior experience—just a commitment to making a difference, a desire to support local improvements, and a passion for community life.

If you're interested or want to find out more, please contact our Parish Clerk, Kath Gruber, at

✉ clerk@ironvilleparishcouncil.gov.uk or ☎ 07595 515154

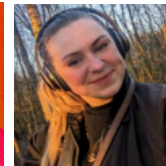
You can stay updated on our work by visiting

🌐 www.ironvilleparishcouncil.gov.uk

Next Meeting: Monday 15 September 2025 at 7pm in the Community Centre.

Residents are warmly welcome to attend!

Your Parish Councillors are pictured below:



L to R: Cllr E. Holgate (Chair), Cllr T. Bowler Vice Chair, Cllr Y. Hutsby-Bird, Cllr P. Rose, Cllr B. Gill, Cllr N. Farthing, Cllr W. Taylor

News from the Forge *from Sally Fisher*

Hello Everyone,

What a long hot summer we have had!! Not to everybody's taste but the butterflies have appreciated it. Last year we were fearing for our Common blue population but partly due to mowing last year, a declaration of a butterfly emergency across the country resulting in a years ban on pesticides, and the warm weather we have seen a good recovery particularly in the areas mown for the first time. Bees have been much more in evidence this year too.

A butterfly favourite, the small copper has returned after a two year absence and is now producing its second brood.

An often overlooked butterfly, the green veined white, was spotted on the boardwalk nectaring on the mud gathering minerals and salts in some numbers.

The large white butterfly was seen in some numbers as part of a country wide invasion from Europe whilst Marlene Eglington was the first to see the clouded yellow, also a migrant from Europe on the Forge. It is still being seen over a fortnight later so not its usual flypast of one.

We have also had several sitings of the marbled white We have had many other sitings including our two red listed butterflies, the small heath and dingy skipper. A good year for sunshine is a good year for butterflies.



common blue by Deb Biss



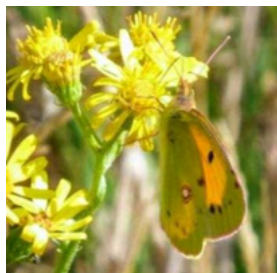
Small copper by Ann Burton



Green veined white by Ann Burton



Marbled white by Deb Biss



Clouded Yellow by Marlene Eglington
Also picture to the left

We have also had some very distressing times such as the hacking down of 15 mature silver birch to build a structure and fires in the middle of Canyons wood. Utterly irresponsible in the middle of woodland in very dry weather as at any other time.

We have had to call on the services of the fire brigade twice this year both of which were deliberately started and called in by concerned members of the public. Please continue to call in such things. You play your part by being our eyes and ears.

These photographs require no captions. I hope that they are never to be repeated in this Newsletter - Ed.



Let us end on a more positive note - Fruit has been readily available this year and we are continuing to make and sell our jams and chutneys and marmalades. If you would like some at £2 a pot they are available all year round from Deb or myself. Thank you to those of you who recently supported us at the summer fair. Thank you to all who volunteer with us, without you we could not do all we do including one little boy who came to help his grandad repaint the benches.

Contact details: Sally: (07434781465) Deb (07737699584)



An Introduction to the Anvil Club from Maria

The Anvil club is a Family village Pub for everyone to come along for a friendly pint or two. Here at the Anvil we now have two Pool tables for everyone to enjoy. Great entertainment on various weekends for all the family. Feel free to hold any functions or meetings here at the Anvil via your host Maria.



The Anvil Club is open every evening - Monday - Tuesday 5-10, Thursday 5 - 11 Wednesday 5 - 11, Friday 5 - 12, Saturday 2 - 12 & Sunday 2 - 10



The Anvil Club is the perfect place for your functions. Where you can celebrate those special times or hold important meetings.



A cosy place, to enjoy a pint of good bitter ale with a welcoming atmosphere. A great place for a game of Pool too. With Your host Maria serving ales clear and bright.



See BACK PAGE column 1 for full details of activities & events



Find us on Facebook



"The Anvil Club"

Contact Maria McCormack on 07816-439881

The Anvil Club, Casson Street, Ironville, Nottingham, NG16 5NN



RAILWAY CARRIAGE YOUTH CLUB

Follow the QR code (left) to:

Find out more about the Club via:

Facebook, Instagram, YouTube, Website

Contact forms & Feedback:

Parent/Carer, Practitioner & Young Person

Ways in which you can support the Club



On the front page of previous Newsletter (22) there was a Youth Club photograph by Judy Mallaber - Apologies for not giving Judy credit -Ed.



The Life of A Parish Warden *by John Watson*

Hello everyone,

I would like to talk about my work in the village.

In our last edition I told you of the planter we was putting on Nottingham Lane triangle this is now complete and is full of colours with bedding plants and bulbs.

All the other planters have been cleared out with new bedding plants in place.

They also had two coats of paint to brighten them up and also some minor repairs.

In the last edition I told you of the upgrade of the bus shelters which was to bring them up to a good standard.

This been approved by the council and work will commence early September.

Some of the jobs up and coming is tree and bush pruning around the village in the following locations:

- Nottingham Lane at the bottom.
- Nottingham Lane under the two bridges
- Waterside steps - bushes and tree.
- Highway signs that branches are starting to grow over at various places around the village.

These should all be completed by the time you read this article.

Other duties in between is looking after the allotment strimming and pruning and keeping the paths clear and tidy.

My duties in between these jobs are Litter picking around the village, reporting fly tipping to all relevant authorities: DCC, AVBC & FUTURES.

One of the plans for next spring is to plant wildflower seed at the Ironville side of the triangle to give it more colour.

Kind regards parish warden, *John*



“TOOTSIES” FOOTCARE - AFFORDABLE FOOTCARE

Age UK Derby and Derbyshire and NHS Derbyshire County are working together to offer an affordable, long-term footcare solution for people aged 50+.

In Ironville Church Hall, Casson St. on:

Wednesday 24th Sept 2025 and Wednesday 5th Nov 2025

To book an appointment please call 01773 766922

(More dates follow on - every 6 weeks approx.)



Our volunteers look after the section of Cromford Canal owned by Derbyshire Wildlife Trust, running from the railway bridge to where the canal meets the entrance to Erewash Meadows. It is an important wildlife corridor for nature and a haven for protected species including water voles and white clawed cray fish. It's special that we have them on our doorstep, and as a community we need to look after them. The area attracts wildlife photographers from far and wide and puts the area on the map as a place you are guaranteed to see a water vole. Unfortunately, we have had to ask visitors to refrain from throwing food into the water to attract the water voles so they can photograph them. There is plenty of natural vegetation for them to eat. Guidance from the Royal Society of Photography asks photographers to refrain from baiting wildlife for photographs for ethical and biosecurity reasons. Throwing purchased fruit or other foodstuffs into the canal can introduce pesticides and can attract rats, impacting the delicate ecosystem.



This season the canal has been alive with the sounds and sights of reed, sedge and grasshopper warblers, whitethroats and black caps. The harbingers of warmer climes, the swallows, swifts and house martins arrived, although they are here so briefly and soon leave again to fly south for the winter.

It's also been a season to celebrate the abundance of insects. They play a vital role as both prey and predators, acting to keep nature in balance. There have been so many ladybirds this year, keeping the aphids in check and clouds of butterflies in the fields and along the verges are almost reminiscent of years gone by. Without insects everything above them on the food chain suffers.



Whitethroat – Courtesy of Rob Smith

Phenology, the study of the timing of natural events, helps understand the intimate connections between birds nesting behaviour and the availability of food, and how climate and seasonal changes influence these events. Nature's clock has been finely tuned this year, providing a variety of tasty snacks for lots of bird species and their young, just at the right time. The dry and warm start to the spring was a significant factor but we like to hope that communities are tolerating wilder nature areas and ditching the use of weed killer and ant powder in their gardens, supporting the insects that are essential for a healthy and resilient ecosystem.

It's been the driest Spring in England since 1893, coupled with record temperatures and low rainfall, challenging for agriculture and water resources. We are always preoccupied with maintaining water levels in the canal and we monitor water flow using drone images past and present. However, like everywhere this year, we have seen depleted water levels. Aside from the dry weather, someone has been dismantling the dams we created using natural materials from the canal. These are intended to hold water in pools and manage the water flow. Additionally, the canal walls had sprung a few leaks.

The scrape pond has dried out this year, although water has pooled further down the water-course. Additional to the dry weather, conservation grazing cows have flattened the edges of the pond, making it less able to hold water. Looking on historical maps of the area and drone images there appears to be either a natural spring or an old mining shaft which has also been trampled and blocked. Lowland wet grassland areas, such as the scrape, are important for natural flood management and support numerous species. Much of this valuable habitat has been lost over the years due to drainage for agriculture and development, and remaining areas are often of a reduced quality due to poor management techniques, pollution and climate change. We are liaising with Derbyshire Wildlife Trust who have plans for a re-wetting project across several local nature areas. We hope this project will include the scrape as a floodplain for the River Erewash. Meantime, we have repaired the leaks in the canal walls, burrowed a small channel to help feed water back into the scrape and inserted a pipe under the towpath that will divert water onto the scrape when water levels in the canal are high. We plan to access a digger in the autumn to create more depth for the scrape pond and create muddy edges for wading birds.



Installing a pipe under the towpath to divert water onto the scrape when the water levels are high

The owl box on the Erewash Meadows fell from its post at the end of last year and on inspection it was too difficult to mend. Derbyshire Wildlife Trust have provided us with a new one and we hope to have it installed in the same spot towards the end of the year.

We have cleared bramble from the area on the railway bank overlooking the Meadows, to preserve that spectacular view from the bench.



We have contributed funding towards a seat which has been positioned at Lock 4 (see page 26), opposite the Lock Keeper's Garden. The funding was donated to our group and Friends of Cromford Canal from the Jacksdale Walking for Health Group, so the seat is a suitable thank you and a fitting place for walkers to rest for a while. Thank you to the Friends of Cromford Canal for sourcing and installing the seat.

We have also cleared vegetation and positioned a new bench to open a great view across the scrape. Our volunteers take a moment to enjoy the view after some hard graft. **Below** you can see our team installing the new bench and Compo, Clegg and Foggy taking in the view

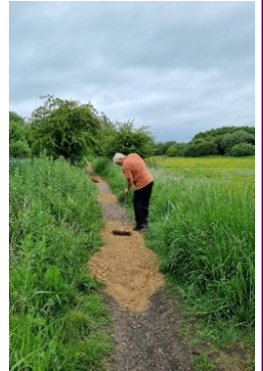


The wire on both boardwalks has been replaced as it was becoming a trip hazard. The boardwalk leading to the Erewash Meadows had collapsed and has been temporarily fixed as it was unsafe.



Visitor access has been maintained, with subtle management of the vegetation encroaching onto the tow path, leaving habitat for insects and small mammals but ensuring visitors can enjoy their walk.

Path Maintenance -Sections of the towpath have been repaired and maintained using the pile of stone provided by Longcliffe Quarries. Since the beginning of the year, we have accrued over 430 volunteer hours and collected at least 260 bags of litter. There have been some challenges to contend with, a few large items have been thrown into the canal and the River Erewash. The fridge/freezer took some effort to get out of the river and was collected by Ashfield District Council. We regularly receive and value feedback from visitors on how special the site is, as a lovely place to walk and for the abundance and variety of wildlife. The site would be neglected and potentially attract antisocial behavior and fly tipping without our committed and skilled volunteers. Their time, energy and enthusiasm is greatly appreciated.



For further information or if you would like to volunteer with us, please contact us via our Facebook page or by email. Our new email address is cromfordcanalgroup@gmail.com

New Project at the back of the Railway Carriage Youth Club

The land at the back of the Carriage had become overgrown. Here we are now seeking to create a tranquil, calming area where the young people can go for peace, quiet and calmness. We would like to create a sensory garden around the edges with a lawned area possibly suitable for croquet, bowls or activities that the members choose. There will be small paved area with appropriately spaced seating around. Plus an area for wildlife of course at the back. Funding was achieved by applying for a grant via the Police and Crime Commissioner's "Safer and Stronger Communities" project.



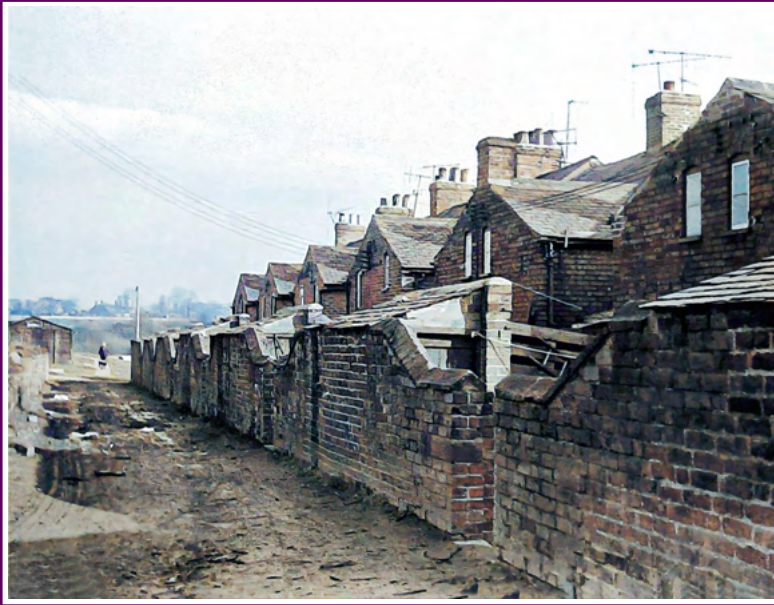
LEVELLING & PREPARING THE LAND APRIL 2025



SEED SOWING



EXTERNAL LIGHTING FITTED AUGUST 2025
LAWNED AREA BECOMING ESTABLISHED



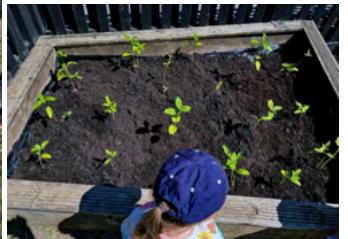
Foundry Row

This 1970's photograph illustrates the back of Foundry Row (now long gone), one of the first rows to be built in Ironville in 1811. In the background you can see the railway line and the shed type building what locals once called "The Huts". This was used for football changing rooms and far end was a meeting room for pensioners.



Clowns Children's Centre

May 20th was World Bee Day and to promote this Pre School planted our Sunflowers into the garden. We spoke about how the bees visit the flowers in the garden to collect nectar and pollen and transferring pollen from one flower to another.



If you would like to find out more about the activities we do and are interested in a place for your child please contact the nursery on clownsnursery4@yahoo.co.uk. We would be happy to tell you more and help you to understand how much fun the children have learning through play. We offer places for children who are eligible for 2 year funding and for all 3 and 4 year olds.



It is with the greatest of regret that we have to inform you all that our pop up in Ironville will no longer be running.

We would like to thank Shae at the crossings club for being so accommodating towards us and for all the volunteers who have worked so hard to make it happen.



Unfortunately there are a couple of reasons. Our Lovely Steve has had a stroke and Unfortunately with him being out of action it means we actually lose four volunteers and secondly, we simply aren't seeing enough people using the Ironville pantry for it to be viable.

We are still running the Riddings pantry and that is open every Tuesday from 10am till 1pm.

We have been asked when we shall next be running a Saturday and up to now the only date we have in store is in September, however, our lovely volunteers are wanting to open either on a Monday evening or a Tuesday evening (after school till after tea time'ish).

We are very sorry and know this will disappoint some people but unfortunately we can only do so much, we're only human.

Thank you to everyone who has visited the pantry over the past year at Ironville.

We hope to see you at Riddings.



Crossings Club Monument Lane

☎ 01773 606657

Monday - open 6 - 10 pm

Tuesday open 6pm to 12am

Skittle Matches

Wed. open 5pm - 12am

Food served from 5.30 - 7.30pm

Darts & Dominoes matches

Thursday - open 6pm - 11pm

Friday open 4pm - 1am

Various Bands & Entertainments

Oscari Pantry every two weeks

Saturday open 8.30-1am

Breakfast Served 8.30 - noon

Sunday open 12pm to 10pm

Free Bar Nibbles

Meat Draw - Sunday 3pm

*The Club can cater for ALL occasions,
also free room hire. Please contact the
club for more information.*



Wed. Mornings 10am - 12pm held in our homes

☎ Pam 07866861424 for further details



All you crafters come and join us for a morning of crafting of your own choice . . . or why not learn a new one. We enjoy helping each other. We do anything from felting, quilting, crochet, knitting and any other craft that we can think up! Then there's tea and biscuits and conversation too.



CODNOR PARK FISHERY

News from Tony, Steve & Angie

It's been a busy six months at the Reservoir, with lots of highs and some lows.

We have lost the original Swan family to a private lake in Ilkeston, after a battle royal between the old cob and the new cob that brought his swan family up from the Forge pond in the spring.

Most of you know the story, so I won't go into details again. Suffice to say that both families are doing well in their new homes. Many thanks to Linjoy Sanctuary, Ella Roberts and Sandra Shingler, who, over the summer have put themselves out to bring this to a happy conclusion.

We have also started selling bird boxes, coasters and keyrings at the Watersedge Food Cabin, all of the profits will be donated to Linjoy Sanctuary to help towards the vet bills, mainly for the swans and cygnets. So far this year we have raised £200. Thanks to Alison and Wayne Taylor, Marie Brown and of course Ella Roberts. A special thanks to Steph and Tara for collecting all the donations.

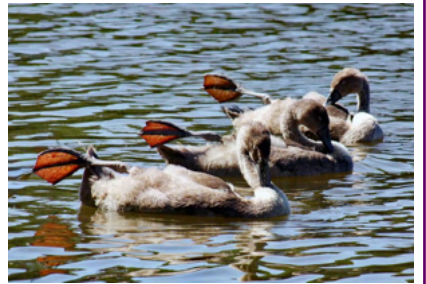
If you would like to donate please see Steph or Tara, they will be happy to take your money
Dog waste and litter are still an issue, although we have seen some improvements around the reservoir.

The car park in the evenings is the main issue with beer cans, takeaways and general rubbish left around the car park, there should be no need, especially when we have waste bins available. Litter can negatively impact both human and animal life and even create hazards. Dog walkers, please keep a careful watch where your dogs are carrying out their business. We have children on bikes, pushchairs and elderly people walking round the lake and they don't want to be cleaning your dogs waste from their shoes and wheels, so pick it up and bin it, please. Roundworm eggs in dog poos can lead to very serious health issues. Just one example. The drainage we have installed along the field side seems to have improved the muddy conditions, but we still have more work around pegs 17 and 18. We now need some welcome rain to really test the work out.

New fishing platforms have been installed along the road-side of the reservoir. We now need to set about the car-park peg and the High bank pegs.

Thanks to the maintenance team, you know who you are, without your help we would never manage all of the work required to keep Codnor Park Reservoir looking as well as it does for everyone to enjoy.

Our objective for the next twelve months is to find enough funding to tarmac the carpark, fingers crossed, it won't be easy.



IRONVILLE SUMMER FUN DAY *Supported by Macs - Article by Natasha*

On Saturday 2nd August we held our summer event where the local community came together to enjoy a fun day out, with entertainment throughout the day from prehistoric dinosaurs to Zoe's Petting Zoo, to balloon modelling, to a reptilian encounter and much more.

The Infinity Allstars Cheer leaders gave a great show and a visit from Scooby Doo and Chase with Majestic Mascots gave the Children a great surprise.

Derbyshire Fire & Rescue came along with a Fire engine and just made the children's day.

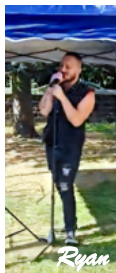
Ryan Atter a local singer gave us a great performance to end our amazing day.

We had many helpers throughout the day and without them we could not make the day happen.

Ironville has a great community which make our events a huge success year after year.

All of us at Macs would like to thank you for your support and generosity throughout the year. You made this happen.

See page 17 to discover even more about the day.



SHANE GREGORY

There is something very special about Shane who sadly died on the 28th June. He was involved with the local Railway Carriage Youth Club for many years. He played a major role as a Youth Worker, working with his colleagues to create a real sense of togetherness and respect for all. This made the youth club feel like a safe and fun family space over the years. The young people chose to have Shane included in the mural design on the exterior of the Carriage, and a special evening was held to show appreciation for his dedication and hard work that he put in over the years. Shane last autumn was even presented with the first ever Mayor's Award from Paul Loble, the Mayor of Amber Valley. He will be missed by everyone at the Carriage.





Sat 2nd August 2025 All around the Church Hall & the Arvill Club



Down at the Carriage - Deepdale, Ironville



BBC
CHILDREN
IN NEED

Sessions on Tuesdays & Thursdays, 5.30pm to 7.30pm

Our local Railway Carriage Youth Club is now managed by Supporting Communities, a dedicated charity focused on meeting the needs young people, and their families in our village. Their guiding principle is "Early intervention is prevention", emphasising the importance of timely support for ALL young people. Their mission is to relieve the burdens of poverty, enhance mental health and well-being, and reduce the number of at-risk individuals, young people and their families, establishing and sustaining high-quality youth and family support. They aim to build the resilience of families and create opportunities for young people to thrive.

Our local Railway Carriage Youth Club represents an innovative approach to youth provision, delivering targeted support within a unique and engaging setting. Since August 2024, Supporting Communities have been delivered the sessions which currently operate across two weekly sessions, providing young people in Ironville with a consistent, safe space for positive social interaction, skill development, and creative expression alongside qualified youth practitioners. Additional sessions are planned. Key achievements to date includes collaborative mural projects, undertaken with a professional graffiti artist, which empowered participants to leave lasting, symbolic marks on their space. This initiative exemplifies the club's commitment to taking ownership, creativity, and community pride among its attendees.



Supporting
COMMUNITIES

Supporting Communities have supported the young people with areas around well being, relationships, community safety, youth voice and future aspirations



As an accessible and distinctive provision, the Railway Carriage Youth Club demonstrates how tailored environments can effectively engage young people, promote wellbeing, and strengthen local connections.

The Club offers a dynamic programme of activities designed to engage, support and empower young people. Their sessions combine recreational activities including pool, board games and gaming consoles with creative opportunities such as arts and crafts and the signature graffiti mural projects.

Young people can access community sports facilities on adjacent courts, delivered by qualified youth coaches, while enjoying musical entertainment in a welcoming environment. Crucially, the trained youth practitioners provide guidance and advice, facilitating open conversations that support personal development. This carefully balanced mix of structured activities and informal social interaction creates an inclusive space where young people can build skills, confidence and positive relationships while expressing themselves creatively. The programme's strength lies in its ability to cater to diverse interests while maintaining a consistent focus on wellbeing, engagement and community connection.



Above & bottom left : The Rolls Royce Supply Chain Apprentice Team on a visit to the Railway Carriage and it's environs to spruce things up.

Below: Virtual Reality comes to the Carriage



Christ Church

Rev Mark Taylor ☎ 01773 833280

Warden: David Fearn ☎ 01773 605447

Services: Sunday at 11.15am

(Every Two weeks—please check)

For more news and information -

Please see the CHRIST CHURCH IRONVILLE Facebook page. This includes the Church monthly Newsletter, which is available also via email or as a paper copy.



Ironville Post Office

We are very lucky to have in Ironville our own Post Office and General Store at the heart of our community. The store not only provides a top class postal service, but also newspapers, magazines and most general household needs.

Mon - Sat : Open 7am - 8 pm

Sun: Open 8 am - 2.30pm ☎ 01773 605472



CODNOR PARK RESERVOIR

Fishing in well stocked water

☎ Steve Scudder
07946 683417
Tony Baxter
07870909071

WATERS EDGE BURGER BAR

Drinks, hot and cold food available.

Open Wed - Sun
7.30am - 1 pm

Steph: ☎ 07800 978153

Tara: ☎ 075140 98133



NEWS FROM PHILIP ROSE

☎ 077301771794 e-mail: philip.rose@derbyshire.gov.uk



Following the May elections, I find myself lucky enough to continue to be asked to contribute to this esteemed publication albeit with a slightly different hat.

I would like to thank all those from Codnor Park and Ironville who voted for me in the Amber Valley Borough Council by-election back in May. To win as an independent candidate is very special for me and it remains a distinct honour to be able to represent you as Borough Councillor alongside Cllr. Kieron Cox.

Thank you.

We are going to see significant changes to local government over the next few years with the abolition of DCC and Amber Valley Borough Council in favour of a 'Unitary Authority', in which the roles of the County and Borough Councils will be combined into one organisation.

My view is that this new system will significantly weaken our democracy, with less accessible representation and the further bureaucratisation of government, in my view; it continues the implementation of the centralised European Union model of government by stealth, coordinated as it is, with the imposition of the East Midlands Counties Authority and the 'East Midlands Mayor' last year; in itself, designed to manage and control the distribution of resources on behalf of Central Government. It is telling that all political parties appear to be in at least tacit agreement with the changes.

The only good news is that as far as I can see, all Amber Valley political party representatives agree that however the new boundaries are drawn, we in Amber Valley should not be joined together with Derby City Council. Phew!

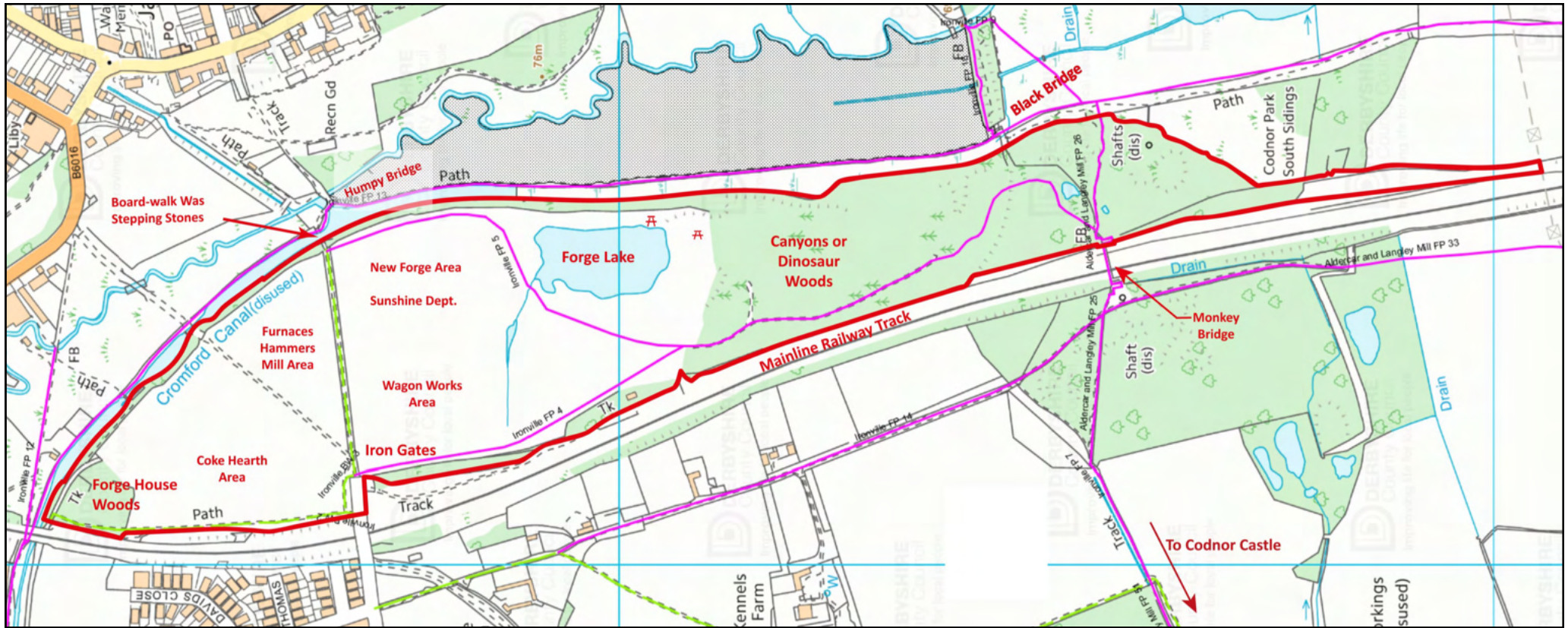
This leads on to the increasingly importance of initiatives and groups run by local people – Codnor Park and Ironville is lucky enough to host many local groups and clubs and, it is worth noting that any group looking for help with funding should talk with Amber Valley Centre for Voluntary Service based in Ripley. Even in these difficult economic times sometimes grant funding may be available and if you don't ask you don't get! Amber Valley CVS offers expert help, advice and support throughout the process.

For example, the Carriage Youth Club has survived and seems set to thrive thanks to grant funding from a variety of sources and with the expert help from Amber Valley CVS. The last year has seen ups and downs but now looks to be in good financial shape for a significant period as we have secured BBC Children in need funding. As usual we all owe a debt of gratitude to Andy Cadman for his fabulous work in bringing everything and everyone together to get us where we are today. The positive new start for the club is in stark contrast to the sadness we all felt with the news of the sudden passing of youth worker Shane, who helped so many young people find their place in this realm. Thank you, Shane.

We are also grateful to David Walsh of Supporting Communities. David has taken over the operation of the Club and many positive changes are already taking place with many more to come.

Philip

THE HISTORY OF CODNOR PARK FORGE *by John Boucher*



Above: The area of the Forge site is outlined in red, with public footpaths in magenta.

The Codnor Park Forge site was established by what became the Butterley Company about 1797, in order to exploit the coal and iron ore mined in Codnor Park. Initially lime kilns were set up to produce lime with limestone brought in by canal from their quarries at Crich. (There was a private branch canal into the works on the level from above the top lock in Ironville, opposite the start of the Pinxton Arm.)

A few years later blast furnaces were built, and then the pig iron produced was forged into wrought iron using large hammers, hence the popular name 'Forge Site'. The production of wrought iron continued until 1965, almost the last works making it in the country. Attempts were made to produce steel at various times but these did not work very well, so later steel billets were brought in for re-rolling.

Railway wagons were also made on the site right up until 1975, after which the site lay derelict for several years until it was opencast for the coal which occurred at shallow depths, and almost all of the remains of the original works disappeared.

On completion of the open casting the whole of the original works site, together with an area of former bell pits at the southern end, was eventually purchased after a gap in December 2017 by the Friends of Belper Parks and retained as a very desirable nature reserve. (Article on page 3). In its heyday the Forge Site was very prosperous, and transport was a serious issue. Initially relying on the canal, the railway companies were keen to make connections and the Butterley Company encouraged them. The Midland Railway came first, with their Erewash Valley line connected to the works in 1846, and stopping there for a number of years until it was later extended northwards. The Great Northern Railway pushed up past Langley Mill in 1873, again heading for the Forge site, with the extension to Jacksdale and Pinxton following two years later. The GNR line curved round on a high embankment with a single track crossing the River Erewash on a timber trestle viaduct, and then over a girder bridge across the canal and into Butterley Company sidings. Strangely, the GNR did not connect to the Midland Railway until much later, when the single track across the canal was doubled and connected directly to the Midland line and became a useful through route. The GNR then used it as its through freight route, via Ambergate and the Midland Railway, to its ►

large warehouse in central Manchester. The girder bridge across the canal became known locally as 'Black Bridge'. People often comment on its considerable span, which must have made it quite expensive to build and to widen later to double track. It was (and remains) normal practice for a canal company to require anyone wishing to build a bridge over to make a clear span across their waterway and towpath, and as the canal was by then owned by the Midland Railway, the GNR line across was in fierce competition and liable to steal much of their trade from the Butterley Company, it must have been difficult for them to get an exception to place a pier in the offside edge of the canal (no trace of which now remains).


Perhaps this exception was permitted because of the considerable length of the Black Bridge, due to having on the

east side to cross a track joining the farmer's two fields which would otherwise have been cut off by the large embankment, and on the west side a track (possibly a plateway) alongside the canal heading for the Butterley Company coal pits to the south. This explains the wide gap between the brick abutment and the canal, which has most fortunately provided sufficient space for the construction of the new stairway.

Post Script from the Author

May I appeal to any of your senior readers who may remember Blackbridge from their youth, and/or may have been involved in its demolition. Hugh Potter, the Archivist for the Cromford Canal, sent me a few pictures from his collection, and one in particular (see above) sparked much curiosity. We know that the bridge was originally built with a single rail track, and by 1908 it had been widened to two tracks, but it was later reduced to a single track again, for reasons not clear. The photo above shows it being demolished, with the riveted plate girders which had carried the final single track, but with four redundant hog-back beams still lying in place alongside. These four beams could have been Butterley wrought iron, or even cast iron. It may be that they were the original bridge beams, initially retained when the track was doubled, but then perhaps found to be of inadequate strength or other reason so the track had to be removed from them. The levels on which the beams are seated also look very strange. We are keen to learn more about these beams, and if any of you readers have any further information will you please get in touch (via the editor).

The original version of this article first appeared in the Friends of the Cromford Canal Journal "The Portal" (issue 92).



Above: Black Bridge from the south, in the 1960s shortly before demolition, showing the long span.



Black Bridge being demolished in the late 1960s.



Friends of Cromford Canal (FCC) Update

Registered Charity number 1164608



Work Party Report by John Guylar - Spring / summer 2025

The Friends of Cromford Canal have been nominated as finalists by Radio Derby Make a Difference Awards 2025. The judges were so impressed by the efforts and dedication of the volunteers. Thirty-two finalists covering eight categories have been chosen for the finals which are to be held on the 14th September at Derby County football ground, at 2.00pm.

In Ironville, we were asked through FCC member Chris Martin to clear the area behind the church and the car park, of overgrown vegetation. After removing a very large amount of rubbish which had been dumped in the car park, a large group of volunteers set to work on the field behind the church and cut the vegetation where the council mower had not been. The trees on the wall backing on to the cemetery needed a large amount of work, some of the branches were ten and fifteen feet long and coming down to the car park surface. They were removed together with self-sown shrubs and bushes, giving clear space up to the old canal wall. A lot of vegetation and rubbish was removed from directly behind the social club. The grass area behind the church, was very overgrown, so Chris got his genuine Swiss scythe in to action and cleared the lot. There were several work parties on this job and over the weeks. It has started to look good, in time for the village get together on Aug 2nd. Another work party then went to Casson St and set about clearing the footpath through to the main line of the Cromford Canal at the Pinxton Arm bridge, so as to be clear through the growing season. They managed to widen one hundred metres of footpath, cut a lot of brambles down which had grown across the footpath.



Photographs showing clearing the area behind the church and the car park, of overgrown vegetation. The bottom photograph was taken just before the event



Swiss scythe



Looking good for the big day.

At the Lock Keepers Garden, Lock 4, Ironville, Shirley and her husband Stephen and assisted by her sister Carol, have all worked very hard again this year, mainly because they had to go down every evening to water the plants and vegetables.

They have produced potatoes, cauliflowers, broccoli, dwarf French beans, peas, runner beans onions and broad beans. The first, of several donations to the Age Concern in Eastwood has been made. Carol and her husband Gary have been several times to top the water tanks up, a very slow, time consuming job. In spite, of the dry weather the garden has done really well this year. Several FCC volunteers have been strimming the areas of grass. Shirley wishes to thank all the people who have helped her this year and is very grateful for the support.

She also reports a little brown dog often comes running in to see her. It's very fussy and makes her smile. The two oblong beds at the bottom of the garden have caused one lady some curiosity, Shirley was working in the garden when this lady came to the wall and asked if the two oblong beds were graves? She thought, that maybe the lock keeper and his wife, were buried there.

On Wednesday 7th May, at Lock 4 at Ironville, the FCC set a new seat in position. This was financed by money given to the Friends of Cromford Canal and Friends of Ironville & Codnor Park when the Jacksdale Walking Group were disbanded a few years ago. A suitable plaque has been fitted, to acknowledge the walking group and their legacy. It was agreed that the seat was placed at an angle to face up towards Lock 3. Over a period of four years, the FCC work party volunteers have fitted five seats including this one, along the length from Lock 4 to Golden Valley. Three seats have been placed at the request of his family, in honour of Steven Restoric, who was killed on active service in the British Army. One seat has been fitted at Pinxton Arm Bridge for John Bates (Taffy) who always came to that spot, with his dog, to feed the ducks.



Donation to age concern



Shirley, Carol & Nigel in the Lock Keepers Garden



New Seat by Lock 4

Towards Golden Valley, the short fence at the end of the houses had a number of rotten fence posts replaced and the fence rebuilt by the FCC. This entailed removing the top and middle rails, pulling out the rotten posts, placing and fixing in position the new ones and then replacing the rails. This was done in one morning, by three FCC volunteers. Several more work parties, working towards Golden Valley, removing fallen trees and branches from the canal channel, some of which were quite large and took a great deal of effort to remove them from the water. This operation was made more difficult because of a restriction on the equipment that can be used, by the landowner, DCC.



A report of trees down at Codnor Park Res by the fishing bailiff, Steve Scudder to the FCC, resulted in our licensed chain saw operator, assisted by five members of the fishing club, clearing them. There was a fallen branch at peg 46, which had fallen across the footpath and a fallen tree which was in the water, at peg 8, this had to be cut up into small manageable pieces and hauled it out. A further branch on an adjoining tree suspended by the ivy was winched down and also cut in to manageable pieces. There are several more trees identified as needing attention in the near future around the reservoir.



Trees down at Codnor Park Res.

The FCC had several work parties pulling Himalayan Balsam at the reservoir overspill down towards lock 2. The balsam can grow up to three metres and is very prolific. It has to be pulled before it goes to seed, one seed pod can throw seeds up to four metres. It was one of the pretty flowers introduced by the Victorians but is now an invasive problem.



Pulling Himalayan Balsam



Carol Hartley with large Himalayan Balsam specimen!

The Mansfield Building Society sponsored an interpretation board at Lower Hartshay which has been put in position near the canal bridge, on the old A610 (Hartshay Hill, Bridge 32). Also, at Bullbridge an interpretation board sponsored by local housing developer PJ Homes was installed. These two boards are in a series being fitted at various location along the entire length of the Cromford to Langley Mill by the FCC. So far eight have now been installed. From the early days of the FCC, it was recognised there was a need for these boards which provide information, they communicate the history of the particular site and an understanding of the canal.

One large FCC work party were at Sawmills to clear the mess left after several trees had been felled, not by the FCC and several wind-blown trees which had been brought down over the winter. The trees near the bridge, were thought to be causing damage to the stonework of the old railway bridge put in by the Midland Railway in the 1820's. Six trees in total in the area were piled up in one big heap. Baz and Malcolm started with a chainsaw at one end of the pile. Chris Martin assisted by Chris Aukland and three other members of the work party made a start with a chainsaw at the other end. With bowsaws and loppers, Graham Green and John Breedon were cutting branches away to allow access into the centre of the pile. Wendy, Dennis and Angela were working in the gauging narrows to clear vegetation. A lot of logs were collected by various local people. Other FCC volunteers were clearing and burning rubbish from the houses beyond the narrows, that had been dumped. There is still a bed and a microwave and other things to get at.

On Saturday 22nd March this year, the FCC hosted the annual gathering of the Northern Canals Association at Langley Mill. There were fifty-seven attendees from all over the country, including Huddersfield, Buckingham, Herefordshire and Norfolk. There were presentations from the FCC on the past, present and future of the FCC. After the morning session the delegates were taken on a short walk up to the Beggarlee site where the canal extension will be. The path up to the site is normally a very boggy mess, but the volunteers had in the previous weeks relayed the entire footpath, giving a good sound walking surface. The delegates were shown around and walked the newly created flood alleviation channel.

The Waterway Recovery Group (WRG) a national body of volunteers has since been to finish the flood channel. Our volunteers have spent the Spring and are still working to profile all the gully banks, set some drainage pipes in the flood plain channel and sowing grass seed on the banks.

At High Peak Junction, the FCC volunteers have been very busy pulling reed from the winding hole, which was causing our trip boat Birdwood problems when turning, fouled propeller the usual problem. Also, since last September, the FCC have painted all the buildings, apart from the pumping station, the latest to receive attention is the Wharf Shed where all the doors and windows have been painted. All the windows on the canal side have been left until a safe method of doing the job is approved by DCC. One of the latest jobs has been painting all the seats at Aqueduct Cottage and High Peak Junction.

If you fancy joining our regular work parties contact:
work@cromfordcanal.org.uk

We have a growing number of volunteers who have trained on various machines and to do skilled jobs within the restoration framework. Why not come and join us. train up and you never know what it might lead to.



Seat painting



Repainted Wharf Shed

SAFER NEIGHBOURHOOD NEWS



It's now easier than ever to contact your local policing team in Amber Valley.

As part of the national Neighbourhood Policing Guarantee, the Derbyshire Constabulary website now has all the details of your local team and their priorities, as well as local meetings and engagements.

The Guarantee, launched over the summer, aims to promote visible, responsive policing, with a renewed focus on community safety, strengthening trust between residents and local officers.

You can also now contact your local policing team with a new online contact form, with a commitment to receiving a reply within 72 hours.

To access all this, just visit www.derbyshire.police.uk and enter your postcode in the 'find your area' section.

To support this work, Derbyshire is set to see an additional 35 new officers joining local policing teams over the next year. For more information on future recruitment opportunities, make sure to visit our careers' website: <https://careers.derbyshire.police.uk/> and sign up for future job alerts in the departments that you're interested in.

As autumn draws in, the evenings get darker so please remember 'be safe, be seen' when walking near roads. If you've got a child who's recently started walking or biking to school, sit down and have a chat with them to make sure they know how to stay safe.

Our top tips include:

- Stay alert to traffic – don't wear headphones which could impair your awareness and keep off your phone when crossing the road.
- Follow the Green Cross Code – think, stop, look, wait, look, cross.
- Always find somewhere safe to cross, ideally an actual road crossing or somewhere you can see the road easily and vehicles can see you. Avoid crossing the road between parked cars, on a blind bend or the brow of a hill.
- Wear something reflective or high visibility, especially at dusk and night.

If you see your local Safer Neighbourhood team officers out and about, they might have reflectors or stickers to help you be seen at night too!

Those dropping children off in a car can also do their part by parking responsibly near schools, keeping the yellow zig zags clear and ensuring that pedestrians can use the pavements easily and safely.

Together, we can all do our bit to ensure that everyone can travel around the local area safely, whether it's crossing the road carefully, giving cyclists plenty of room when overtaking or sticking below those all-important speed limits.

Your local team will continue to be out and about and working with partners to tackle any issues as they arise, make sure to say hello when you see us.

To keep up to date, follow us on Facebook: [Alfreton Police SNT](#). Derbyshire Alert is also our community messaging system where you can fill out our Derbyshire Talking survey and let us know about the issues that matter to you, you can then sign up to receive updates from your local team. Search 'Derbyshire Talking survey' to find out more.

TEAM IRONVILLE *by Nigel Lane*

Here we are again, coming to the end of another summer, but this time, unlike any summer we have had in recent years. We have not had any decent rain for months. I have rainwater storage in my own home, but it has now been completely emptied for the second time this summer. The high temperatures we have been experiencing this year are also exceptional; lovely for sun worshippers, but a real problem for flower beds, both domestic and communal.

The long, hot and dry summer has been disastrous for planting; plants are so dry, that they find it impossible to establish themselves and just disappear. Established plants are having to send roots deeper, in order to find the moisture they need to sustain life. Some will succeed, although they are not looking very pretty, as they do not have the energy to sustain blooms. It has been said by some, that autumn is coming early this year, as fruit has ripened early and leaves are already turning gold and falling; the meteorologists are countering this by saying that fruit has ripened early, because of the long, hot summer we are experiencing and the leaves are falling early, because it has been very dry recently. The bottom line is that there are pros and cons to this weather we are having, but I can't help feeling that the downsides are beginning to win. If we don't have significant rain soon, next year could be much worse. We can't water the beds around the village for obvious reasons, so we have to rely upon Mother Nature to look after them for us. I suspect that, unless things change soon, there will be some big gaps in our flower beds next spring. We have already cut down the number of beds we are looking after, due to a shortage of help, but we will probably now need to look at those beds, which we think we can maintain into a much warmer and drier future.

We really need to look at planting more drought-resistant breeds of plant. That will take money, of which we have a little and will also take effort. We are a team of four members, the youngest of whom is rapidly approaching 70. We all get out on a Tuesday when we can, but time is catching up with all of us. We will continue to do what we can, but there will come a time when we can no longer continue. Come and join us on a Tuesday morning; it's great fun and good exercise.



TERMINUS PARK *by Sacha Springthorpe, Curator - Princess Royal Class Locomotive Trust*

As one of the most famous train stations in the world, it might surprise some of you to learn that St Pancras Station was actually built right here in Derbyshire at Butterley Ironworks. Others might already be aware of this fact, and maybe even know of past relatives who worked on this project.

At the time of its construction in 1867, St Pancras Station had the largest unsupported arch in the world. It comprises 25 principal arch trusses, each weighing 55 tons, set at regular intervals, and built into massive brick piers. As described by a plaque on the platform, "*The arch of the glass-and-iron train shed spans 240 feet and is over 100 feet high at its apex*". Once it had been completed, St Pancras also took the record for having the largest glass and iron roof in the world.



In stark contrast to the success of St Pancras, the site that made the bones of the station, Butterley Ironworks, stands in disrepair and cannot currently attest to its own former significance. In light of the loss of this tangible link, The Princess Royal Class Locomotive Trust (PRCLT) have embarked upon a new project to highlight this story for Butterley and the local area.

Terminus Park stands beside the West Shed Museum at Swanwick Junction (run by the PRCLT and home of the locomotives Princess Margaret Rose and the Duchess of Sutherland).

It will contain a number of artefacts sourced directly from St Pancras station following renovation works during the installation of the Eurostar (HS1). These artefacts, including three columns, two hydraulic end buffers and a semaphore signal, have been installed on a newly constructed mock train platform. The remaining area will be grass, with an accessible path running through it..

During the project, the PRCLT will be taking some students from Ironville and Codnor Primary School to London for a special tour of St Pancras and some London sights. There are later plans for the students to partake in the opening ceremony and grant funded planting sessions.



Artefacts sourced directly from St Pancras Station



We would like to express our gratitude to all contributors to this project: East Midlands Railway Community Fund, Ripley Town Council, Midland Railway Trust, J C Balls and Sons Ltd, Dotts Ltd – Excavator Driver Training, Whitehouse Construction Co Ltd, Butterley Ironworks Trust, Derby Museum, Midland Railway Society and The National Railway Museum.

The park is intended to be used as a quiet space for reflection and as an overflow for events. It will be free for all to use, and will be open daily in line with West Shed opening times. It will open officially in Spring 2026, but is currently taking shape. Feel free to swing by West Shed to take a look at our progress and say hi. If you have any information about St Pancras that you think might contribute to this project, please contact us at :

enquiries@prclt.co.uk or ☎ 01773 743986

LOCAL COMMUNITY BOXING FOR ALL

By George Gm

The sessions at Ironville Church Hall are free for ALL Participants and are funded by 'Get Out Get Active' (GOGA) and UK Shared Prosperity Fund. Move More Amber Valley manage the GOGA fund, which is here to support members of the Amber Valley Community to keep fit both physically and mentally and supports a variety of different initiatives across Amber Valley.

My session is a non contact Boxing session with the main ethos of having fun, trying something new and is totally inclusive for all abilities, ages and levels of confidence.

We so far have had 12 sessions funded with another 6 remaining with the hope of more in the local area in the future.

The sessions are normally on Fridays between 7 & 8pm. To find out more Telephone Karen on [07971126382](tel:07971126382) or e-mail: karen.rhodes@ambervalley.gov.uk



Charles Gibson - Memories of the Canal Inspector at Codnor Park



Mr Gibson explains the workings of a lock to local school children.

Some years ago Steve and Sue Footitt related their memories of Sue's grandfather Charles Gibson. They spent many an evening at Lock House [between Locks 5 and 6] sitting under the hiss of the gas lamps (there was no electricity) talking about the canal with him. He had started as a bricklayer and had worked his way up to become an Inspector.

At the end of the garden were the offices and workshop. At one time there was a saw-pit in the workshop for building lock gates.

He claimed he was one of the last few people to leg through the Butterley Tunnel before it was finally closed and said it was dead straight: "built like a gun barrel". There were passages off where originally boats had loaded coal direct from the underground working.

The LMS [London Midland & Scottish Railway, who owned the canal] employed him at this time and one of their changes was at Bull Bridge aqueduct where they made provision for trains to fill their tenders with water from the canal as this was better quality water.

Towards the end of the working life of the canal it was uneconomic to maintain some of the reservoirs and Charles Gibson had the spillway built at Golden valley just by the east entrance of Butterley Tunnel. This was to reduce the water level so it would no longer be classed as a reservoir and would not need the maintenance of a proper reservoir.



The Lock House before the extension was added to the front, with the workshops to the right. The boat that Sue remembers can be seen tied up to the bank. Steps can still be seen leading down from the towpath to the canal today.

Charles was born in Ripley on 13th February 1880 and died in a Buxton Nursing Home in October 1979, just short of his 100th birthday. He met his future wife at a dance and they were married in 1910, making their home at Hartshay, where their first child, Marjorie, was born. Sue's Uncle Thomas was also born at Hartshay before the family moved to Sawmills, where Charles had a smallholding. Here Sue's mother, Mabel, was born in 1918 and her Aunt Jessie in 1920. The family moved to Holloway, then to a cottage on the Nightingale Estate at Lea. He had joined the canal staff in August 1907 and was promoted to canal Inspector in January 1932 replacing the retiring inspector Mr Winson. As a result, the family made their last move to the Lock House at Codnor Park.

He was in charge of the stretch from Langley Mill to Cromford and walked the entire stretch once every four weeks, inspecting everything from the water levels, footpaths and hedges, to sluices, bridges etc. He walked from Codnor Park to Langley Mill and back in a day and, two weeks later, did the other walk from Codnor Park to Cromford and back. He was in charge of a joiner, a bricklayer, a welder and three labourers.



A snapshot of Mr Gibson describing his garden to local school children.

When Sue was a child she vividly remembers the boat that her Grandad used to bring supplies over from the other side of the canal. At the time, there was no road access to the canal side lock house. 'Red Road' was only a foot/cycle path from Jacksdale to Codnor Park. She especially remembers the loads of coal that had to be shovelled into the boat from a lorry on the opposite side of the canal, rowed across and then shovelled out on the canal side ready for storing in the outhouse. This was what Sue had been waiting for, as she was allowed to join Charles in the empty boat for its return journey.

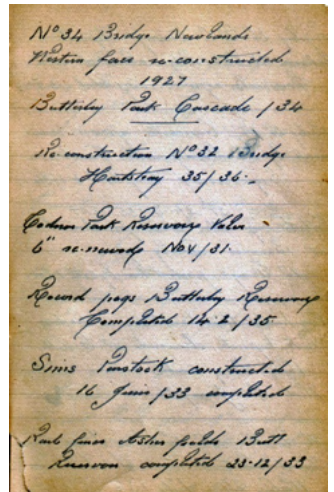


In this well-known photograph, Edward John Sampson is on the tiller and Mr Gibson on the left.

Another family member, Linda Radford, told us about his garden. Charles Gibson was known for his garden, which was often photographed in local papers. He also had rain gauge/ meteorological station which the met people came to read. He also tested seeds. He had one garden for roses, one for veg, an orchard and a lawn. His borders went up in tiers to a lawn, there was a huge weeping willow and an ivy seat. There was a lot of land and an enormous cellar where he did a lot of his work. From Red Road you went up from the cellar to the kitchen etc., then up again to the bedrooms.

To the right is a page from Mr Gibson's notebook recording, amongst other things, the reconstruction of Ripley Road Bridge 32 (by the former Gate Inn at Hartshay) in 1935/6.

This article is produced in this Newsletter with thanks to Hugh Potter and the Friends of the Cromford Canal. It is adapted from one that first appeared in The FCC Journal "The Portal" Issue 93 - Summer 2025.



A walking group pass by in 2021

VE DAY

80th CELEBRATION



Anvil Club



Benjamin Court

The Wrens have been busy bees this term!

By Karl Judge (Ironville and Codnor Park primary School)

EYFS Seaside Fun

Wrens enjoyed a wave of seaside excitement this term! From building sandcastles and enjoying (pretend) ice creams to exploring the coast past and present, the children learned about water and sun safety, became 'eco-warriors' protecting marine life, and discovered the wonders of the deep blue sea. A splash of fun and learning all round!

Wonderful World Week – Spain

Wrens jetted off to sunny Spain during Wonderful World Week. They found Spain on the map, learned Spanish words, created Gaudí-inspired mosaics, danced to flamenco music, and made carnival masks, maracas, and fans. A vibrant celebration of Spanish culture – ¡Olé!

First Aid Day

We also took part in a First Aid Day, learning how to put on plasters and bandages, what to do in an emergency, and how to place someone in the recovery position. A splash of fun,



Crooked Line Club Line Dancing Every Tuesday in Ironville Church Hall - 7.30pm - 9.30pm

Hello and welcome to the Crooked Line club! Still here all these years on and enjoying all the best music, dances as well as socialising and having a good old natter.

As you can see by the picture below we're one big happy family and always welcoming new starters who have never danced once in their life, to experienced dancers. Whatever your level of dance, we endeavour to make people welcome.



Don't forget, the first session is free, no membership, upfront payments or signing up malarkey! If you've never tried line dancing before, now's the time to start. We dance around 50% Country music, and 50% pop and chart music. It may surprise you that we dance to Ed Sheeran, Elton John, Rod Stewart and even Black Lace! Whether you're 8 or 80, come and have a go and meet new people and make friends. From what I've seen on TV these days I'd rather be out!

Also, don't forget the door prizes... everyone, dancing or not receives a door ticket which gives you a chance to win a prize. I put wines and chocolates out every week, plus the raffle prizes too and 50p per ticket to win cash! All proceeds go towards hot dog nights, buffets etc. etc. and sometimes live artists when available.

Look forward to seeing new faces, so come on board!!



FACTOIDS RELATING TO IRONVILLE AND CODNOR PARK

taken mainly from Newspaper clippings circa 1852 onwards

The bell of Ironville Church was made by Mears of London, 1852 at Whitechapel Bell Foundry, and weighed 6C 3Q. 21 lbs or 777 Lbs.

During its life the Church has gone through various alterations and improvements inside. Organ replaced, choir stalls brought forward and elevated, electricity superseding gas etc.

Following the first vicar Rev. John Casson, 1846 to 1869, we have had the following; - Revs. W Littlewood, W.E.Bradstock, R.P.Hills, F.E Hooper, J.J. Cross, D.G.Smlth, W B, Lawrence and I. O. Evans as Vicars of the Parish.

An addition to the cemetery was made and consecrated in July 1934.

With regard to the schools, a new Girls school was opened in 1873.

Later came the Mission Room, and the new Infants School.

In October 1903, Ironville School was termed a voluntary or 'non- provided' school supported partly by rates. The Church was responsible for the fabric. That responsibility is now passing from their hands.

Jacksdale and Pye Hill children came to Ironville to the end of 1906.

The Monument was erected in memory of William Jessop, First sod was turned by W.S. Greaves, then 8 years old, in 1853. He was out for a walk with his father, and the workmen asked him to do this. Mr .F. Wright laid the first, stone on October 9th 1854 they were building until 1857. The Monument was struck by lightning on July 8th 1861, causing the damage that has been repaired in recent times.

A Grand Fetes were often held in the grounds of the Monument and visitors came from all parts by 1st, 2nd or 3rd class on the railway. In 1849, the Fete was carried on for two days. Also a notice of one held on July 29th 1861 at the Monument Grounds, with two bands, display of fireworks, and balloon ascents, both under the auspices of the Codnor Park and Ironville Artisans and Mechanics Library. On another occasion Blondin, the famous tight rope walker,

walked from the Monument top to the ground. (However, it wasn't the famous Blondin you assume it to be, but a female Blondin who copied him (the real one that is). She was quite famous in her own right, and one report says she got stuck whilst trying to tight rope walk across the Thames and had to be rescued).





As a social housing landlord, we know it's just as important that people live in a safe and comfortable community as they do a safe and comfortable house. This is why we carry out estate walkabouts across many of the areas where our 10,700 homes are across the East Midlands.

Estate walkabouts are a chance for our customers and neighbours to give us feedback about where they live and let us know what more we can do to help. Earlier this year we carried out a walkabout around Openacre in Ironville, and we were joined by the police and community wardens from Amber Valley Borough Council. It's important that we work closely with partners as we all have different responsibilities and powers.

We walked around the streets for two hours, finding areas for us to focus on and talking to local residents. Everyone we spoke to was positive about the area they lived in and had no concerns.

We met the [Friends of Ironville and Codnor Park](#) community group who were caring for the green spaces around the park and a local shop keeper to discuss any concerns they had, but none were mentioned.

We did find some fly-tipping which has continued to be an ongoing issue in this area. We've been going to regular meetings with the Ironville Parish Council and along with Amber Valley Borough Council we're all working together to plan how to make the area tidier.

To start with, we're working with Amber Valley Borough Council to replace the communal bins on Openacre to help prevent rubbish from overflowing. We're also in the process of arranging a skip day with the parish council, and a community litter pick to keep the area looking tidy. We're just working out the dates for these, but as soon as we've got everything confirmed we'll advertise these on our website and Facebook. You can find us at www.futureshq.co.uk or search 'Futures Housing Group' on Facebook.

Hopefully by the time of the next newsletter we'll have lots of progress to share!



Ironville School Boys

Realistically this photograph could be from anytime from 1890's - early Edwardian Era.

The Oxford tie the master is wearing would date it after 1888.

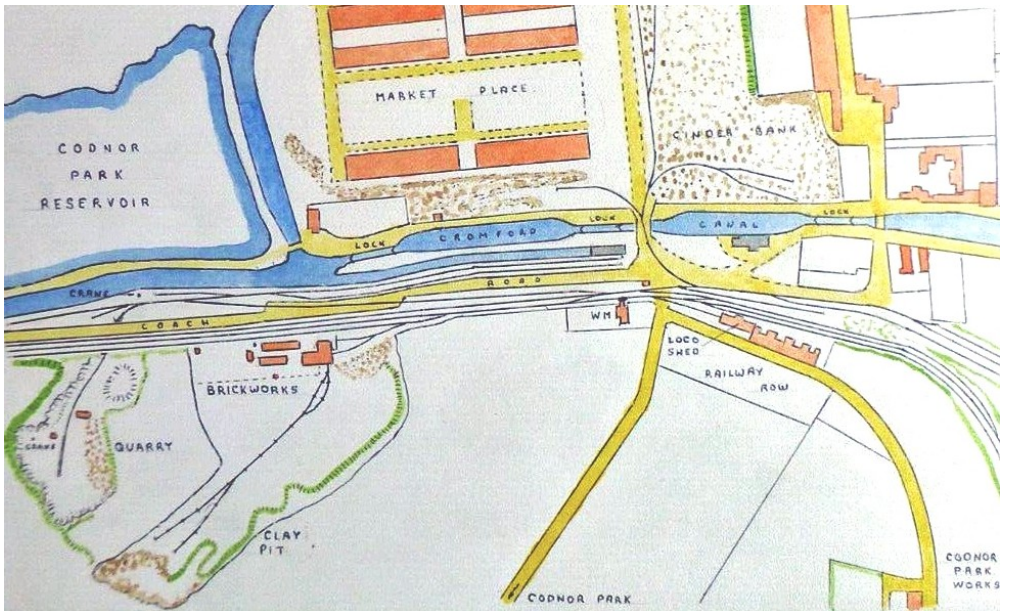
Photo colourised by Rami

DID YOU KNOW THAT THERE ONCE WAS ONCE AN ENGINE SHED AT THE END OF RAILWAY ROW?

You can see it quite clearly in this 1907 photograph (middle left) with a large window on the side.



Below is an 1881 map of the area showing the Loco (Engine) Shed. It also shows the Brickworks which is also long “disappeared”. Lot’s of other interesting things to spot too!



Cream Teas



Join us at Christ Church,
Ironville

for a Cream Tea with
strawberries and cream
on Saturday June 7th 2pm to 4pm
£5 per person

A total of £302 was raised for
Church funds.



What's on at the Church Hall?

Mon - Nic's Fitness Crew ☎07810898868

Beatz Fitness 5.45pm - 6.45

Tues - Nic's Fitness Crew ☎07810898868

Rockbox Workout 5.45pm - 6.45pm

Tues - Crooked Line Club - 7.30- 9.30pm

Dancing with Daz just for fun - free door prizes

☎Daz 07967760065 or Steve 007548856386



Wed - Nic's Fitness Crew ☎ 07810898868

Dance Toning 5.45 - 6.45

Thurs - Nic's Fitness Walking Class - 10am - 11am

Thurs - Nics Fitness Crew Step - Class 5.45-6.45pm

Thurs - Taekwondo - 7 to 8.00 pm

These sessions are no longer open to the public.

Friday Boxing - normally 7pm - 8pm

See page 33 for further details

What's on at the Anvil Club? (See page 5)

Monday 5-10 Free Pool

Tuesday 5-10 Free Juke box- Free Pool

Wednesday 5-11 **Bingo Sticky 13 Play Your**

Cards Right *Open the Box on Bingo nights*

Raffle **Number Card** Hot & Cold food

Thursday 5-11 Pool night - Pool Team

Friday 5-12 **Meat Draw** 9pm

Saturday open 2pm-12am

Sunday open 2pm - 10pm

The Friends of the Cromford Canal Talks:

Most talks start at 7.30 pm in Ironville Church Hall

Sept 15th - The Nottingham Canal

Oct 20th - The Robin Hood 500 guidebook

Nov 17th - The Sheffield Blitz

See the FCC website: www.cromfordcanal.info

to find out more about forthcoming talks.

☎ **MARIA MCCORMACK**

07816-439881

FOR BOOKINGS



IRONVILLE CHURCH HALL

IRONVILLE PARISH COUNCIL

Clerk: kathgruber@icloud.com ☎ 07595515154

All meetings take place at The Community Room,
Victoria Crescent, Ironville, starting at 7.00 pm .

(See website: ironvilleparishcouncil.co.uk)

Every meeting includes a period for Public Participation at which local residents are invited to attend - a time allocation of 15 minutes at the beginning of the meeting. (Also see page 2)

Next Meeting : Monday 15th Sept. 2025

We look forward to seeing you there.



Cllr. Liz Holgate (Chair)

Railway Carriage Youth Club, Deepdale.

The Youth Club offers a wide range of activities that young people have planned and organised with youth workers. These include arts, sports, music and a space to chill out with friends. Opportunity is available to try new activities and seek advice & information on most teenage topics.



Sessions on Tues & Thurs, 5.30pm to 7.30 pm

To find out more why not "pop" in and have a chat with the youth workers.

OAP Community Centre Activities

Victoria Crescent- Bookings ☎ Pam Cope 01773 606454

Mon: Coffee Morning & Bingo 11am - 12pm

It is hoped that it may be possible to organise other events & activities like Bingo on other days on other week days.

Do come along and join in with these community events



Ideas and local information, news or events please e-mail:

Andy: acadman175@yahoo.com

This Newsletter has been supported by the D.C.C. Community Leadership Scheme

via Councillor Philip Rose

The next issue is: TBC - Deadline: TBC

The views expressed in this Newsletter are not necessarily those of the Newsletter Editorial Team.

We also make it clear that we reserve the right to refuse or edit items that are sent in.

